

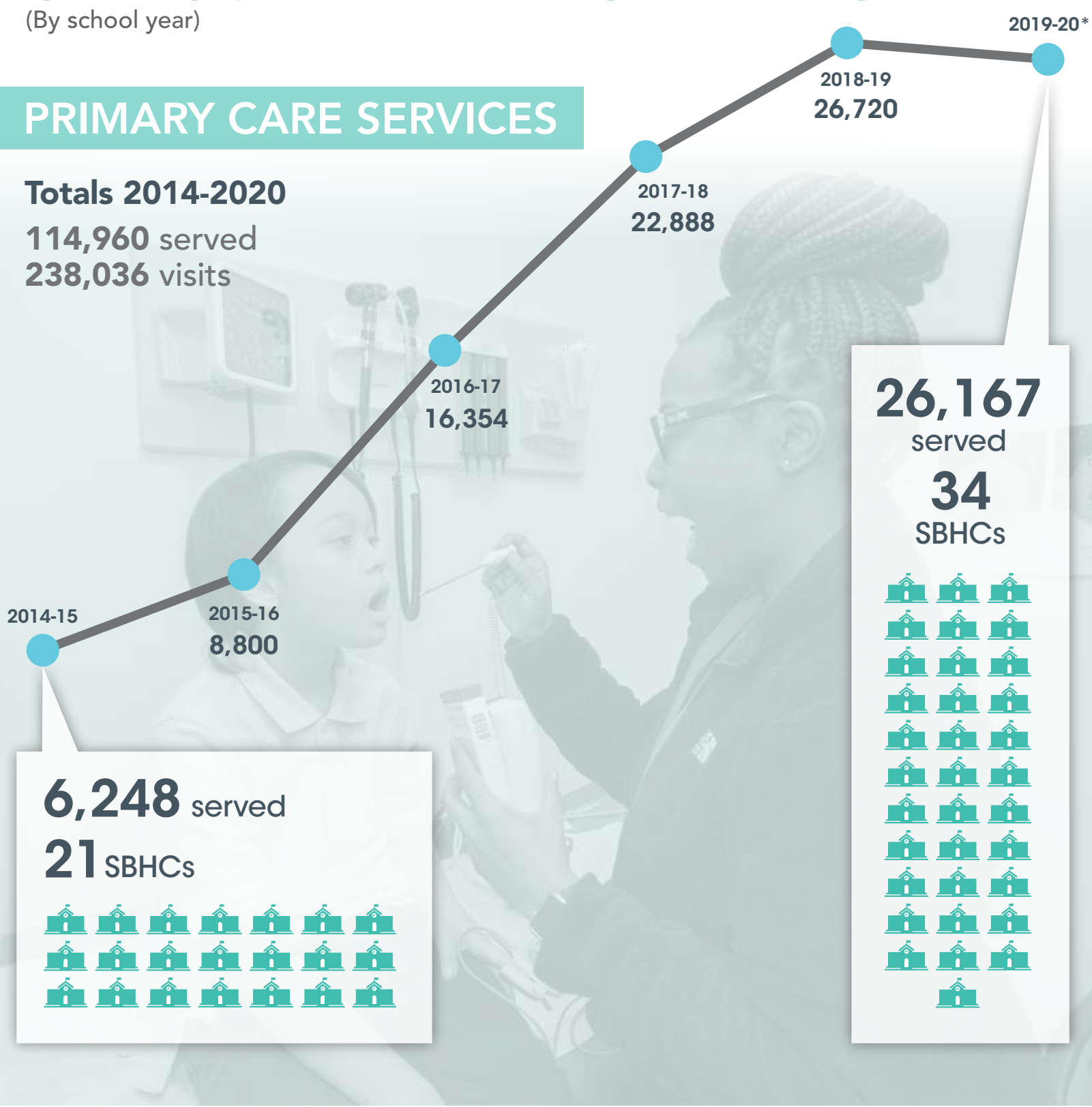
SBHCs BY THE NUMBERS

(By school year)

PRIMARY CARE SERVICES

Totals 2014-2020

114,960 served
238,036 visits



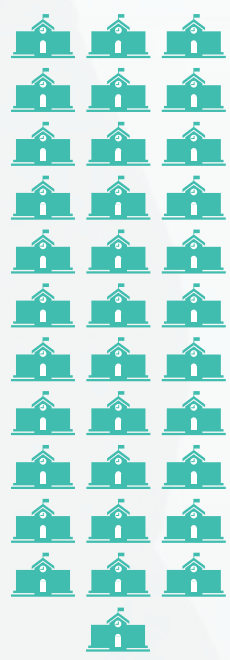
6,248 served

21 SBHCs



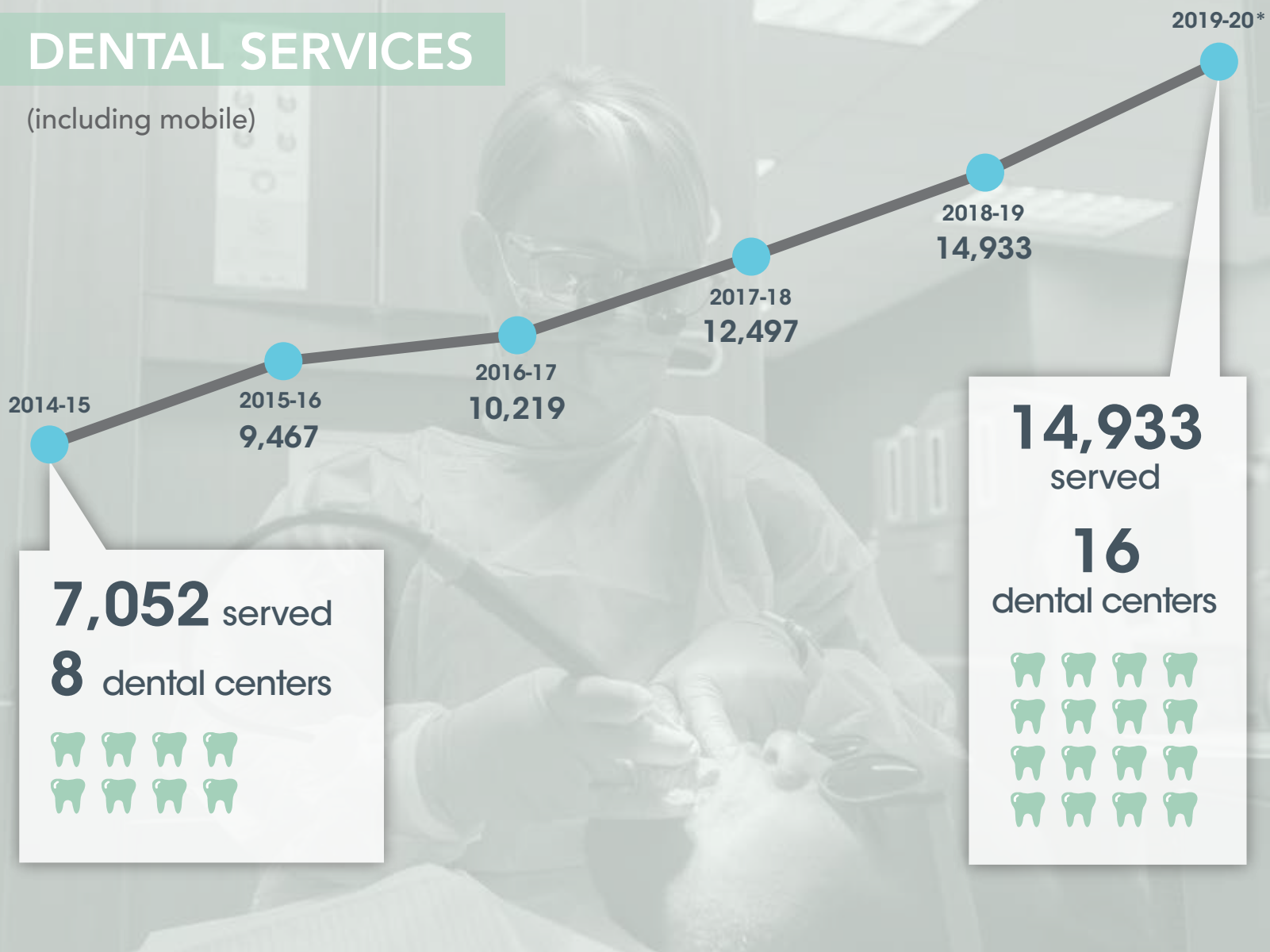
26,167 served

34 SBHCs



DENTAL SERVICES

(including mobile)



7,052 served

8 dental centers



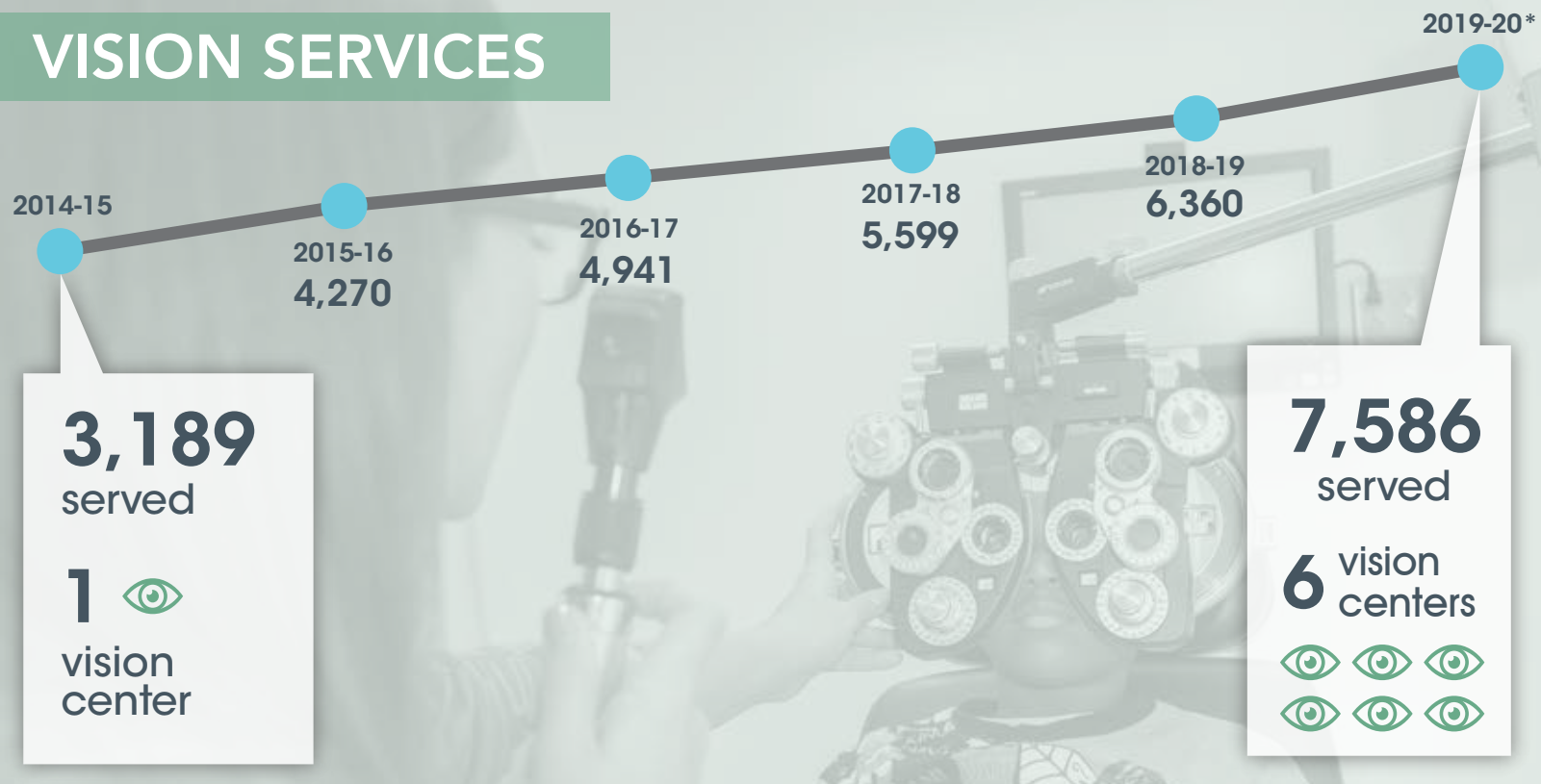
14,933 served

16 dental centers



Totals 2014-2020 | 72,318 served | 144,207 visits

VISION SERVICES



3,189 served

1 vision center



7,586 served

6 vision centers



Total 2014-2020 | 31,749 served

*School closures because of the COVID-19 pandemic affected 2019-20 numbers.

SOURCE: Growing Well