

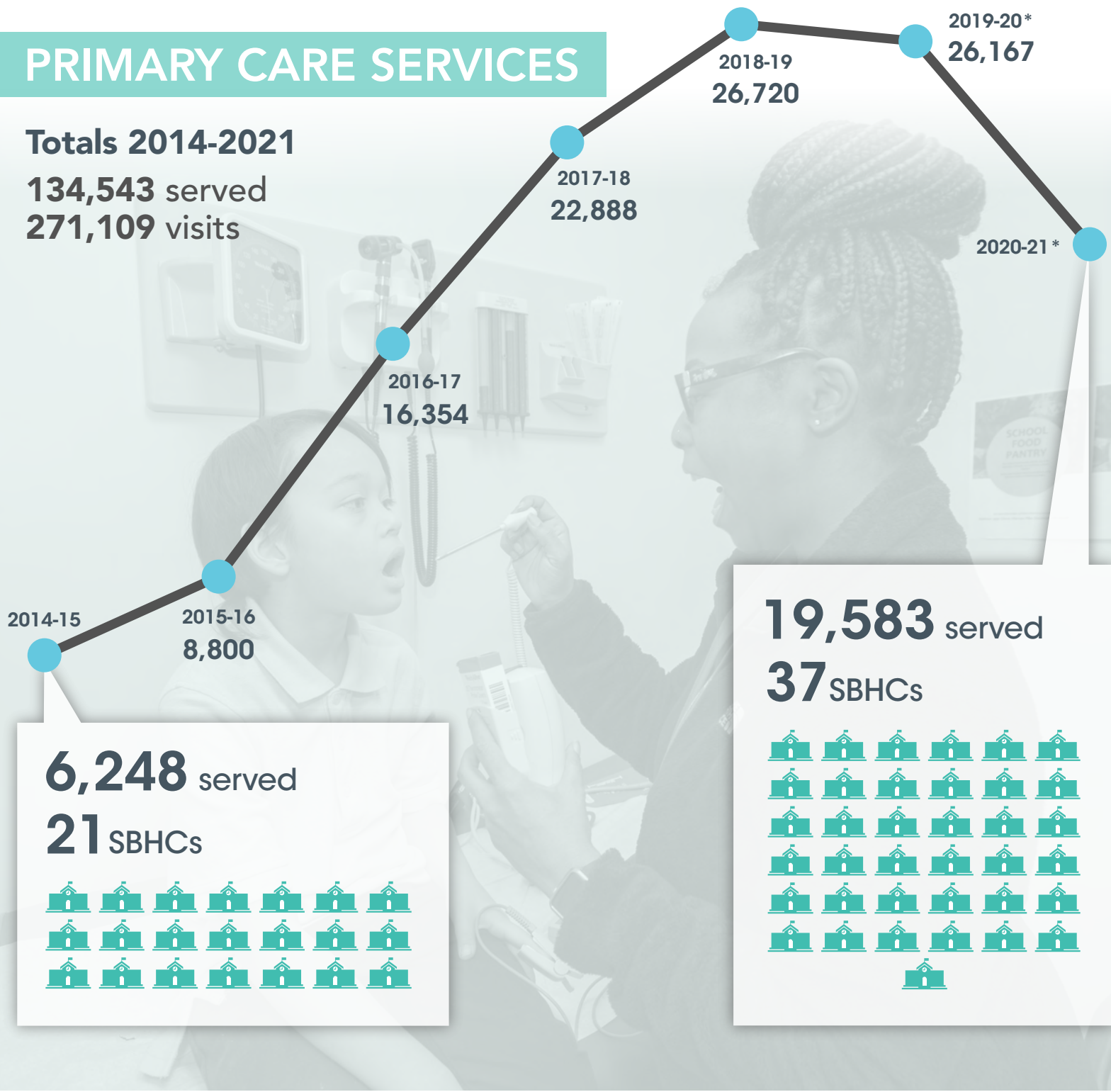
SBHCs BY THE NUMBERS

(By school year)

PRIMARY CARE SERVICES

Totals 2014-2021

134,543 served
271,109 visits



6,248 served
21 SBHCs

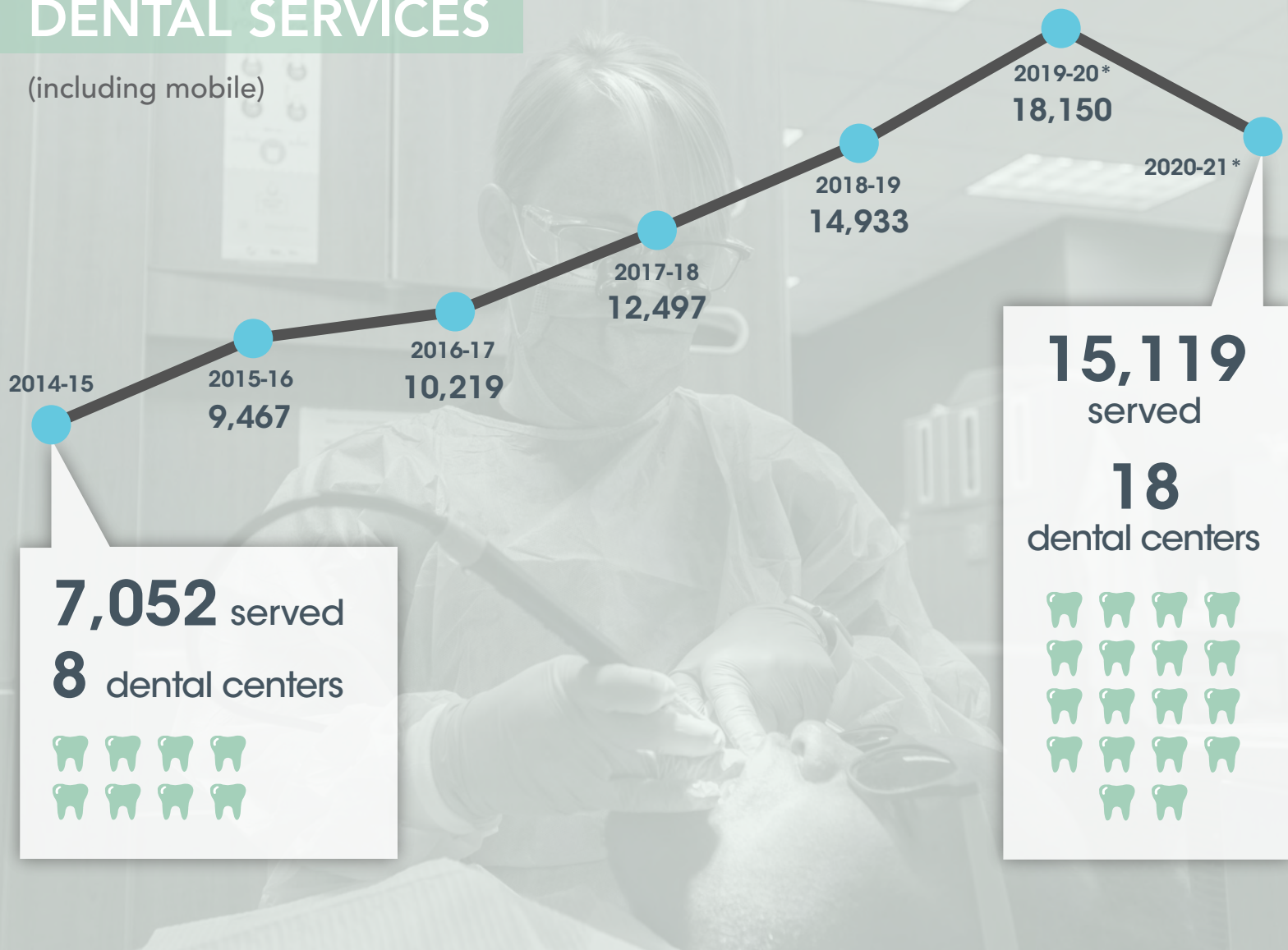


19,583 served
37 SBHCs



DENTAL SERVICES

(including mobile)



7,052 served
8 dental centers

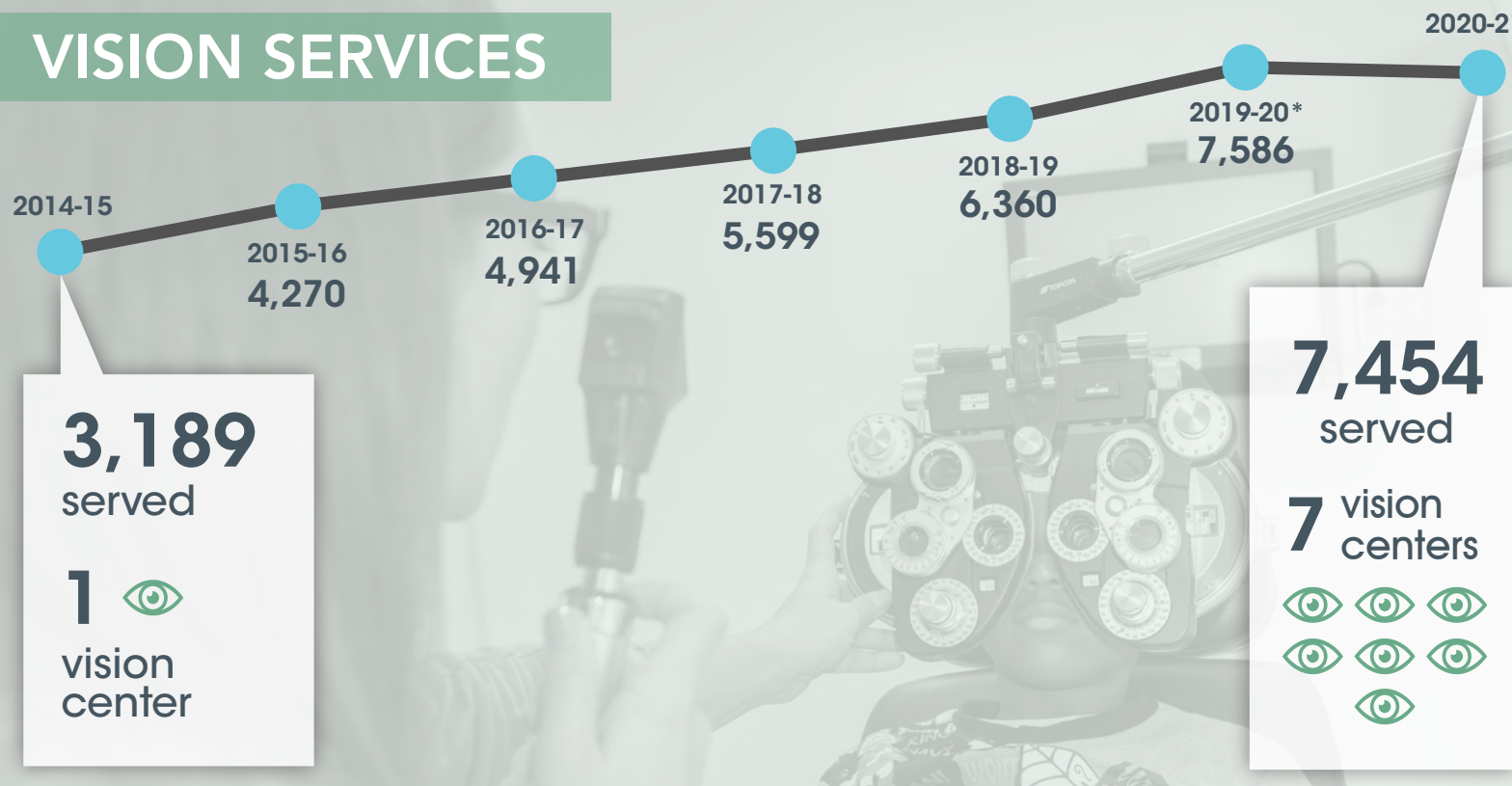


15,119 served
18 dental centers



Totals 2014-2021 | 87,437 served | 173,820 visits

VISION SERVICES



3,189 served
1 vision center



7,454 served
7 vision centers



Total 2014-2021 | 39,203 served

*School closures because of the COVID-19 pandemic affected 2019-20 and 2020-21 numbers.

SOURCE: Growing Well